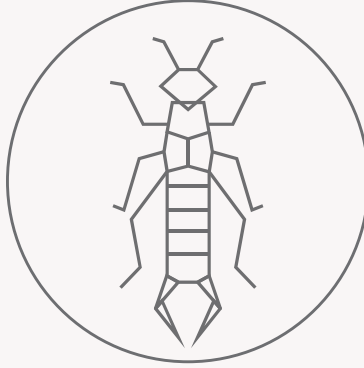


EARWIGS



EARWIGS

Color: Dark brown

Shape: Long, narrow

Size: 1 inch

Region: Found throughout U.S.

Habits

Earwigs hide during the day and feeds on leaves, flowers, fruits, mold and insects at night. These insects live together in large numbers outdoors. Earwigs can be found under piles of lawn debris, mulch or in tree holes. They gain entry to a structure through exterior cracks.

Threats

Contrary to folklore, earwigs do not crawl into ears and eat people's brains at night. They do not spread diseases, but their menacing appearance can be alarming to a homeowner.

Prevention

Remove harborage sites such as leaf piles, mulch piles or other vegetation. Seal cracks and crevices well to prevent structural entry for optimal earwig control.